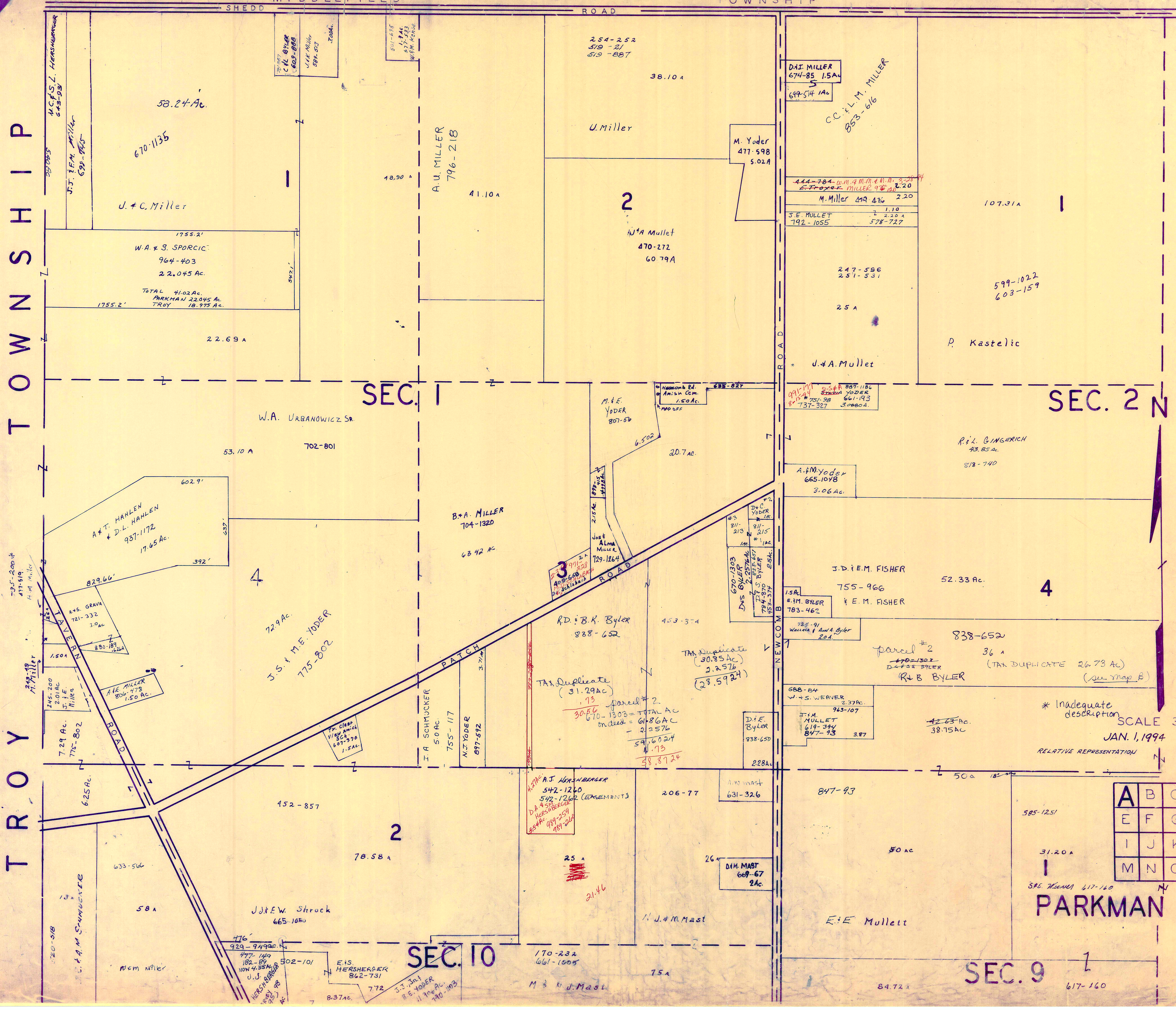


TROVY TOWNSHIP

MIDDLEFIELD TOWNSHIP



SEC. 1

SEC. 2 N

SEC. 10

SEC. 9

PARKMAN TWP.

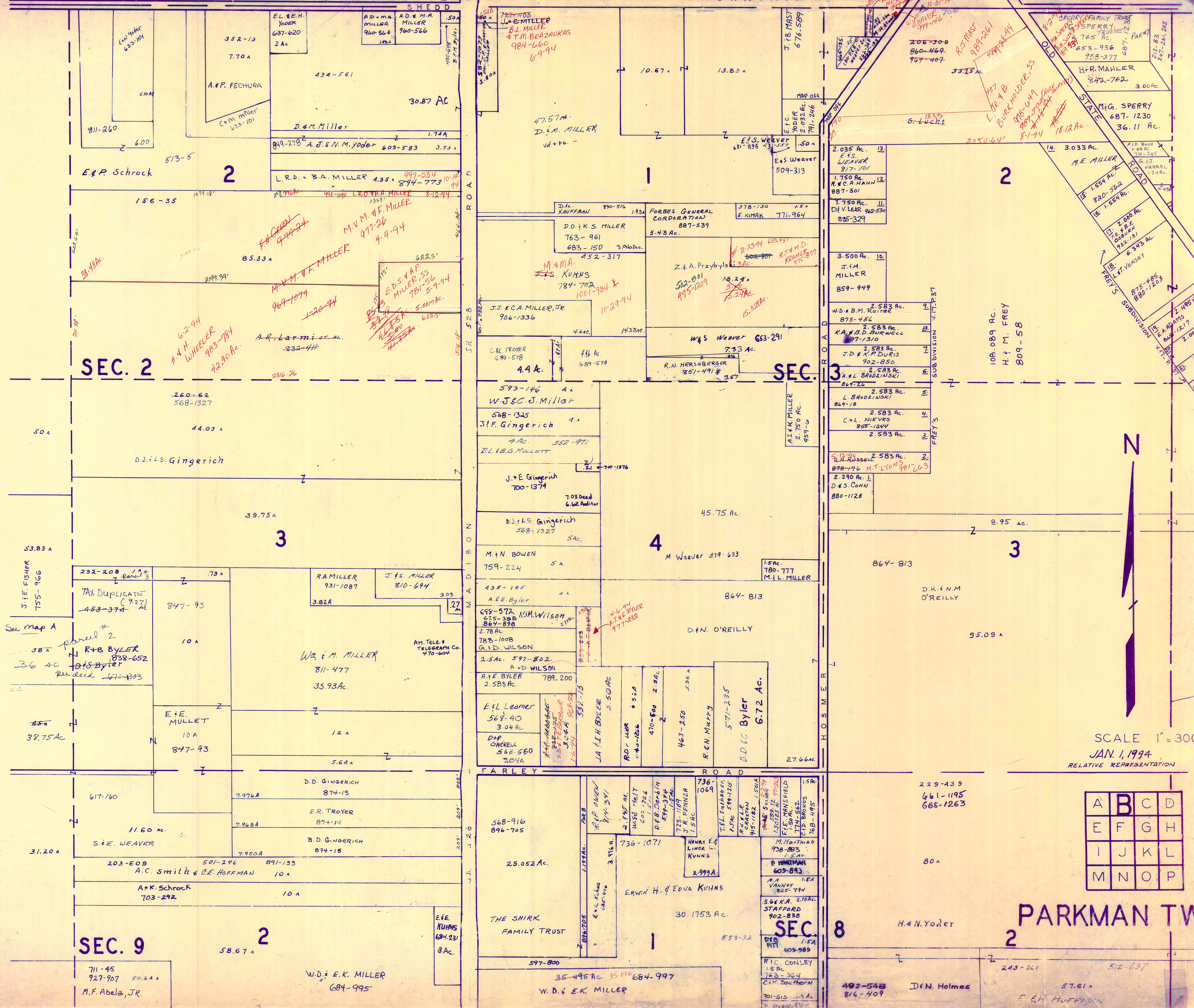
A	B	C	D
E	F	G	H
I	J	K	L
M	N	O	P

SCALE 300' = 1"
JAN. 1, 1994
RELATIVE REPRESENTATION

TAX Duplicate (30.85 Ac)
2,257.6
(28,592.4)

parcel # 2
670-1303 = TOTAL AC
on deed = 618.6 AC
- 2,257.6
= 59,602.4
N. 73
58,872.4

* Inadequate description



SEC. 2

513-5
156-35
260-62
568-1327
44.03 A
D.J. & L.S. Gingerich

SEC. 3

53.83 A
S.I.E. FISHER
755-466
387-93
10 A
R+B BYLER
838-652
36 AC
D.F. Byler
Rd. 170-803
45A
38.75 AC
E.I.E. MULLET
10A
847-93
31.20 A
S.E. WEAVER
11.60 AC
617-160
7.976A
874-13
ER. TROYER
874-14
7.963A
B.D. GINGERICH
874-15
7.950A
203-609
501-246
891-135
A.C. Smith & C.E. HOFFMAN
10 A
A.K. Schrock
703-292
10 A
E.I.E. KUHNS
684-231
3A.
711-45
927-907
50.2A
M.F. Abela, JR.

SEC. 9

58.67 A
711-45
927-907
50.2A
M.F. Abela, JR.

SEC. 1

777-105
J. & E. MILLER
B.L. MILLER
& T.M. BRAZUKAS
984-600
69-94
47.57A
D.S.M. MILLER
10.67 A
13.83 A
E.S. Weaver
611-1136
2.032 AC
791-216
E.S. Weaver
509-313
D.H. KAUFFMAN
830-516
1.93A
FORBES GENERAL CORPORATION
887-539
5.43 AC
D.O. & K.S. MILLER
763-961
683-150
3A6AC
452-317
M. & M.A. KUHNS
784-702
1001-934
11-29-94
J.J. & C.A. MILLER, JR.
906-1336
4.4A
C.E. TROYER
691-578
4.4A
R.N. HERSHBERGER
851-491
3.57
W.S. Weaver
653-291
7.33 AC
J.F. & C. J. Miller
573-146
4 A
J.F. Gingerich
588-1325
1 A
J.L. & B.G. MULLIKETT
4 AC
552-971
J. & E. Gingerich
700-1374
7.03 AC
6.62 AC Auditor
D.J. & L.S. Gingerich
568-1327
5A.
M. & N. BOWEN
759-224
5 A
435-165
A.E.E. Byler
688-572
N.M. Wilson
685-388
864-889
2.78 AC
788-100B
G.D. WILSON
2.5AC
597-802
A & D WILSON
A.E. BYLER
789.200
2.583 AC
E.I.L. Leamer
568-40
3.04 AC
D.P. O'REILLY
568-550
3.04A
J.A. & H. BYLER
552-15
3.50 AC
R.D. LIER
643-126
470-500
2.4AC
463-250
5.36 A
R.E.N. MURPHY
571-285
Byler
6.72 AC
736-1069
HENRY E. LINDA L. KUHNS
2.999A
ERWIN H. & EDVA KUHNS
30.1753 AC
597-800
35.496 AC
35.046
684-997
W.D. & E.K. MILLER

SEC. 8

568-916
896-705
25.052 AC
3.916 A
736-1071
HENRY E. LINDA L. KUHNS
2.999A
ERWIN H. & EDVA KUHNS
30.1753 AC
597-800
35.496 AC
35.046
684-997
W.D. & E.K. MILLER

SEC. 2

2.035 AC
E.S. WEAVER
817-101
1.750 AC
R.W. A. HAHN
887-501
1.750 AC
D.V. LEAR
922-530
835-329
3.500 AC
J.M. MILLER
859-949
W.D. & B.M. REITER
875-466
2.583 AC
K.A. & B.D. BURWELL
907-1310
2.583 AC
J.D. & K.P. DURIS
902-850
2.583 AC
A. & L. BRODZINSKI
864-26
2.583 AC
L. BRODZINSKI
864-18
2.583 AC
C.N.L. NIEVES
855-1244
2.583 AC
R.N. RUSSELL
878-176
M.T. LINDEN
901-663
2.290 AC
D. & S. COHAN
880-1128
8.95 AC
D.K. & N.M. O'REILLY
95.09 A

SEC. 3

864-813
D.K. & N.M. O'REILLY
95.09 A

SEC. 4

M. Weaver
479-633
1.5AC
780-777
M.I.L. MILLER

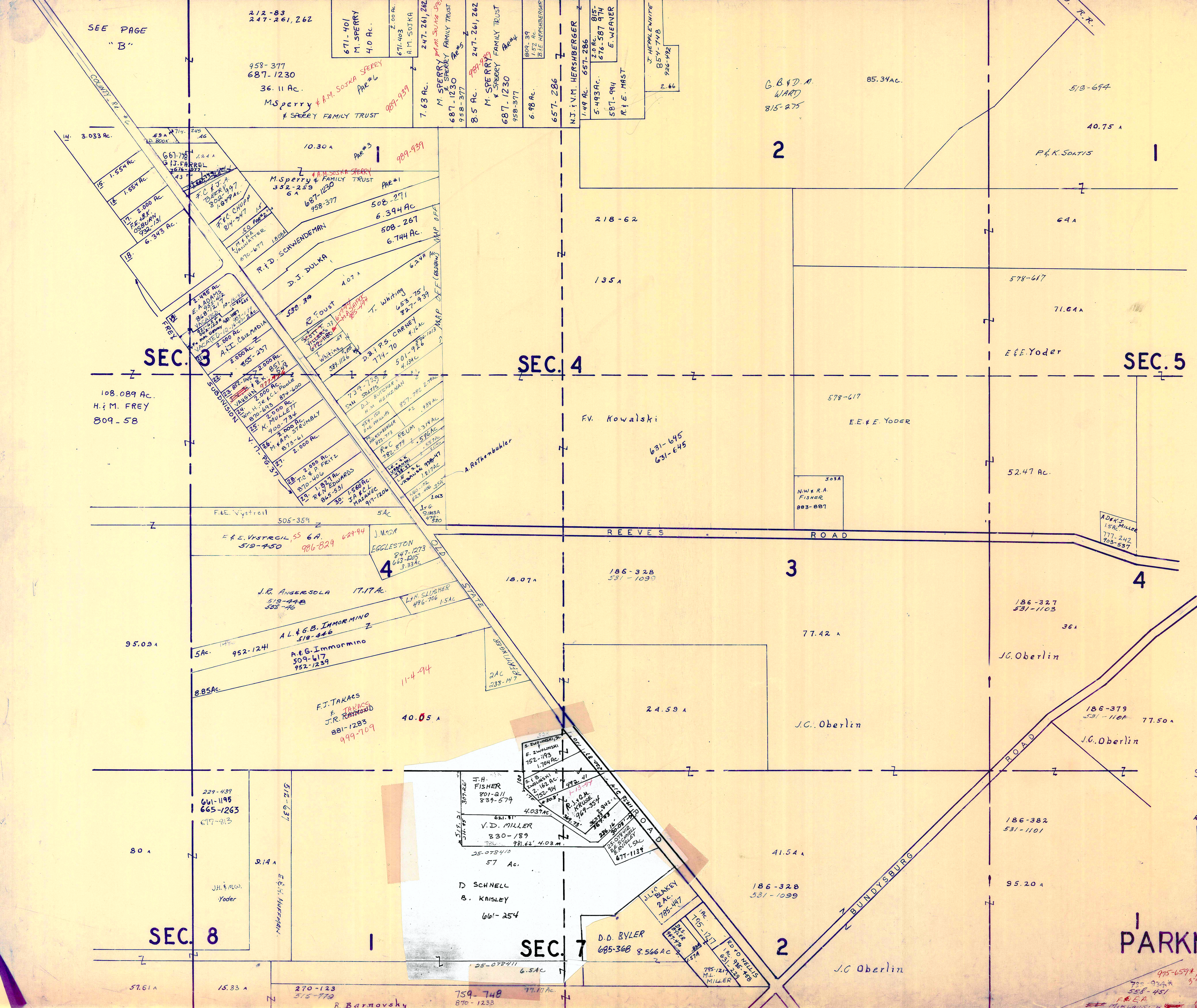
SEC. 8

229-439
661-1195
665-1263
80A
H.N. Yoder
80A
492-548
816-409
D.N. Holmes
57.61 A
F. & H. HUFFMAN

SCALE 1" = 300'
JAN. 1, 1994
RELATIVE REPRESENTATION

A	B	C	D
E	F	G	H
I	J	K	L
M	N	O	P

PARKMAN TWP.



SEE PAGE "B"

SEC. 3

SEC. 4

SEC. 5

SEC. 8

SEC. 7

SEC. 6



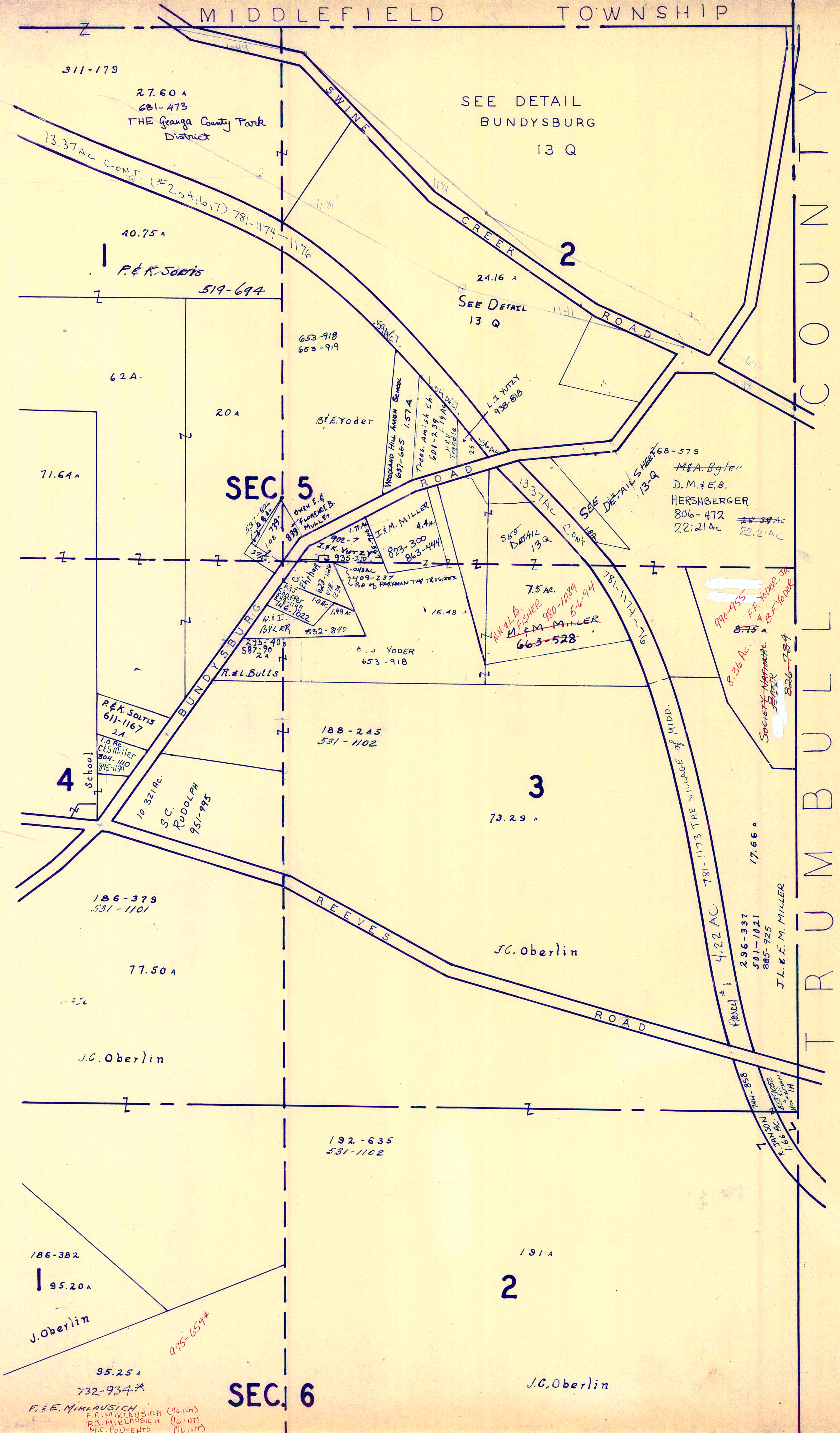
SCALE 1" = 300'

JAN. 1, 1994
RELATIVE REPRESENTATION

A	B	C	D
E	F	G	H
I	J	K	L
M	N	O	P

PARKMAN TWP
SEC. 6

95-659* 2.94
700-974* 5.2
558-451
95.25
E.A. MUKLAUSICH (U.L.I.A.) M.C. CONTENTS W.
R.S. MUKLAUSICH (U.L.I.A.)



MIDDLEFIELD TOWNSHIP

TRUMBULL COUNTY



SCALE 1" = 300'

JAN. 1, 1994

RELATIVE REPRESENTATION

A	B	C	D
E	F	G	H
I	J	K	L
M	N	O	P

* Inadequate description

PARKMAN TWP.

95.25 A
732-934
F. E. MINKOSICH (6/10/93)
R. S. MINKOSICH (6/10/93)
M. C. COUPLAND (6/10/93)

SEC. 6

2

J.C. Oberlin

SEC. 5

3

J.C. Oberlin

4

J.C. Oberlin

SEE DETAIL BUNDYSBURG

13 Q

SEE DETAIL 13 Q

SEE DETAIL SHEET 13-Q

SEE DETAIL 13-Q

7.5 AC.
M. L. B. MILLER 880-1289
M. L. B. MILLER 880-1289
663-528

Panel 1 4.22 AC. 781-1173 THE VILLAGE OF MIDDLEFIELD
296-337
501-1021
885-925
J.L.E.M. MILLER

8.36 AC.
Society of Friends
826-734

168-579
M.E.A. Byler
D.M. & E.B. HERSHBERGER
806-472
22.21 AC.

St. E. Yoder

188-245
531-1102

77.50 A

186-379
531-1101

186-382
95.20 A

J. Oberlin

62 A

40.75 A

27.60 A
681-473
THE Geauga County Park District

311-179

P. & K. Solis

519-694

20 A

71.64 A

R. & K. Solis
611-1167
2 A

S.C. RUDOLPH
951-995

10.32 AC.

77.50 A

J.C. Oberlin

186-382
95.20 A

J. Oberlin

95.25 A
732-934

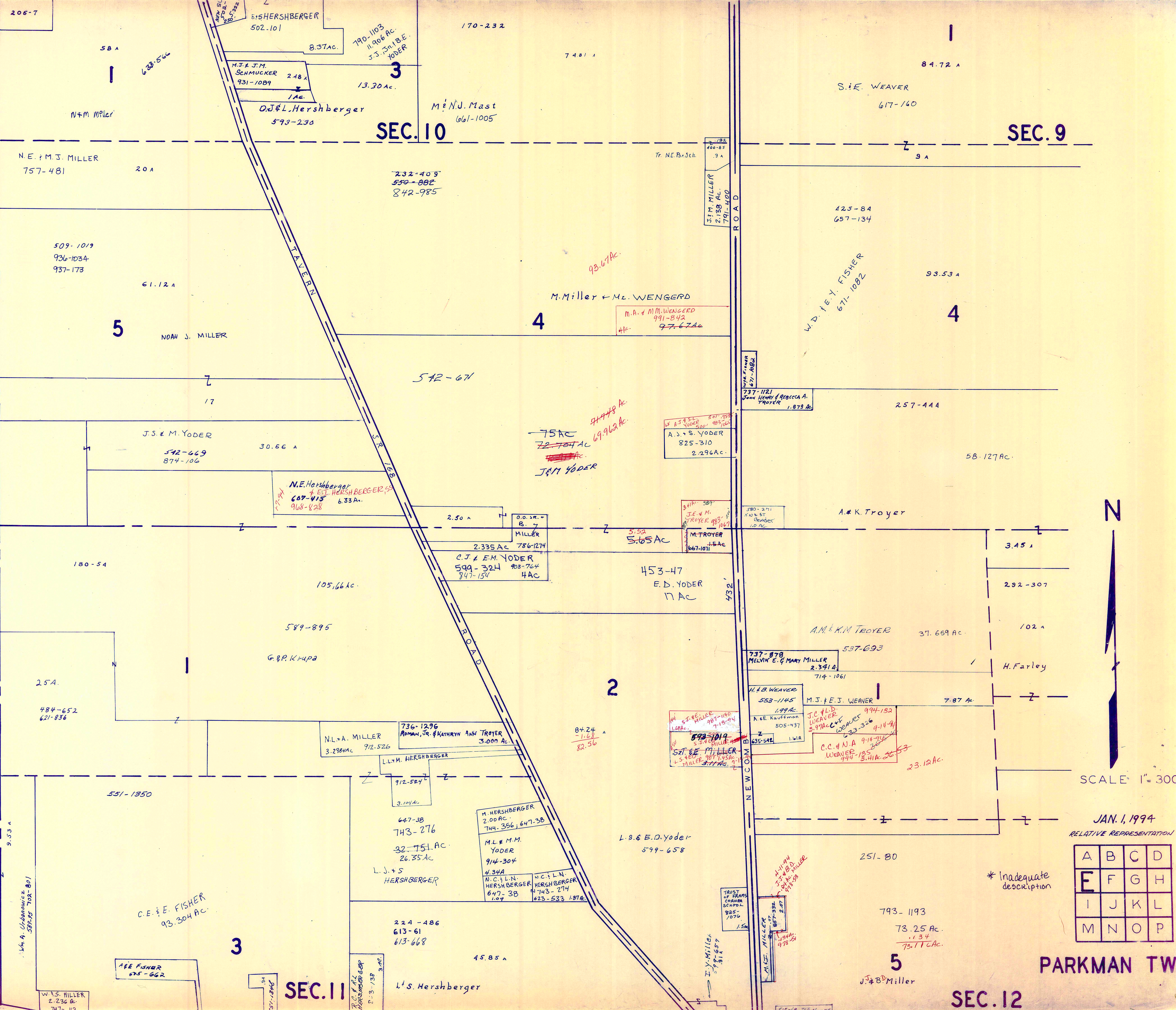
F. E. MINKOSICH (6/10/93)
R. S. MINKOSICH (6/10/93)
M. C. COUPLAND (6/10/93)

SEC. 6

2

J.C. Oberlin

T R O Y T O W N S H I P



SCALE 1" = 300'

JAN. 1, 1994
RELATIVE REPRESENTATION

A	B	C	D
E	F	G	H
I	J	K	L
M	N	O	P

* Inadequate description

PARKMAN TWP

SEC. 12

SEC. 10

SEC. 9

SEC. 11

SEC. 9

SEC. 10

SEC. 13

684-995 58.67 A
W.D. & E.K. MILLER

2

50.24 A
927-907
711-45
899-596

20 A
M.F. Abela, Jr.
711-45 927-907
899-596

188-555
733-1227*
822-843
836-773
931-427

93.53 A
K. Kovach, Jr., et al

3

NEW SURVEY 106.604 AC

836-773

60 A
A. & R. Troyer

72.55
J.I. BEHUM
L. ARMSTRONG
B.I. ROBERTSON
= 1/3 Int. EACH
892-229
812-355

5.45 A

3.631 AC
D. & M. KUHN
756-719

736-1071
E. & E. KUHN
597-800

30.1753 AC

W.D. & E.K. MILLER
684-997
35.496 AC.

206-204

822-843
NEW SURVEY 73.872 AC

836-773
931-427
F. Kovach, Jr., et al

625-993
M.B. & M.E. HOSTETLER
4 AC.

704-7
21.26 A
J.I. BEHUM - 1/3 Int.
L. ARMSTRONG - 1/3 Int.
B.I. ROBERTSON - 1/3 Int.

812-355
690-403
J.I. BEHUM 1/3
L. ARMSTRONG 1/3
B.I. ROBERTSON 1/3
640-204

32.50 A

736-1071
W.D. & E.K. MILLER
J.D. & E. FISHER
742-184
1.5 AC.

J.F.L. AVOLON
599-595
1.5 AC.

R.H. MISCONIN
623-947
1.5 AC.

A. STEPHAN
571-844

1.5 AC. J.E.B. BLIMINGE
597-497

492-548
D. & N. HOLMES
816-409
20 A

512-637
57.61 A

37.48 AC.
91-94
987-73
915-1040
767-107
O.T. RICHARDSON & V.M. RICHARDSON
CO. TRUSTEES RICHARDSON FAMILY TRUST
1/3 INT.

38.22 AC.

R. & M. Pawlicki
699-345

3

311-225

453-704
643-756

78.88 A

J.A. & S.R. KAUFFMAN

206-398
872-795
N. MOSS

51.75 A.

78 AC

THE FLOWERS TRUST
891-01
898-241
718-661
716-141
801-03

103.70 AC.
(PER TAX DUPLICATE)

292-307
981-1032
516-94
99.24 A

2

E.L. Farley

559-940
H.E. FARLEY
1.38 AC.

559-913
R.E.M. ROBINSON
1.38 AC.

251-80
J.J. & B.D. Miller
793-1193

A.K. PRESTON
27.09 AC.
859-193

T.H. SAMSTAG
3.997 AC.
853-197

239-587
525-20
525-20
64-1135
D.P.K. ZAYLOR
1.5 AC.

31.06 AC.

E. & J. Klima
TRUSTEES
899-1010

665-229
2326 A
A. Kavalanowicz
732-98

Donald R. Olmstead
726-143

733-1308
5/8-860
10 A
S. & M. DEMAINSKI, Jr.

232-441
10 A
E. Kubacki

K. & S. KLIMA
1.5 AC.
780-544

239-588

31.06 AC.

M. & P. HUGGINS
578-1337
810-520
17.72 A.

H. SALTIS
558-1226
10.82 AC.
559-237

H. SALTIS
571-1266

443-216
12 A
H. SALTIS
L

D. J. DOLAN
706-377
1.88 AC.

J.A.C. HARRISON
538-080

E. & L. DINES
0.88 AC.
771-35

1-17 MANCE
574-1070
28 AC.

W.L. MELLO
158-721
0.88 AC.

E.M. SLIPPE
603-18
0.88 AC.

206-398
872-795
N. MOSS

51.75 A.

78 AC

THE FLOWERS TRUST
891-01
898-241
718-661
716-141
801-03

103.70 AC.
(PER TAX DUPLICATE)

SCALE 1" = 300'
JAN. 1, 1994

RELATIVE REPRESENTATION
* Inadequate description

A	B	C	D
E	F	G	H
I	J	K	L
M	N	O	P

251-80
J.J. & B.D. Miller
793-1193

A.K. PRESTON
27.09 AC.
859-193

T.H. SAMSTAG
3.997 AC.
853-197

39.46 AC.
V.K. BROWN
708-641
715-659
98.13 AC.

98.13 A.

SEC. 12

30.46 AC. Miller
720-173
718 AC

63.46 AC. Miller
720-173
718 AC

O.C. Miller
647-433
4.99 AC

574-1106
A. WHITE

732-1264
JOSEPH & HELEN HARTZ
732-1264
8 A

377-9
43.09 A

430-482
50 A

747-390
CHRIS H. & MARY W. FISHER
5.00 AC.

621-24
4 A
J.J. TROYER

703-1087
J.T. BLASKO

E. & S. ZAYLOR
502-7
40 AC.

88
33 A

9
50 A

10
50 A

11
33 A

12
88

430-482
50 A

747-390
CHRIS H. & MARY W. FISHER
5.00 AC.

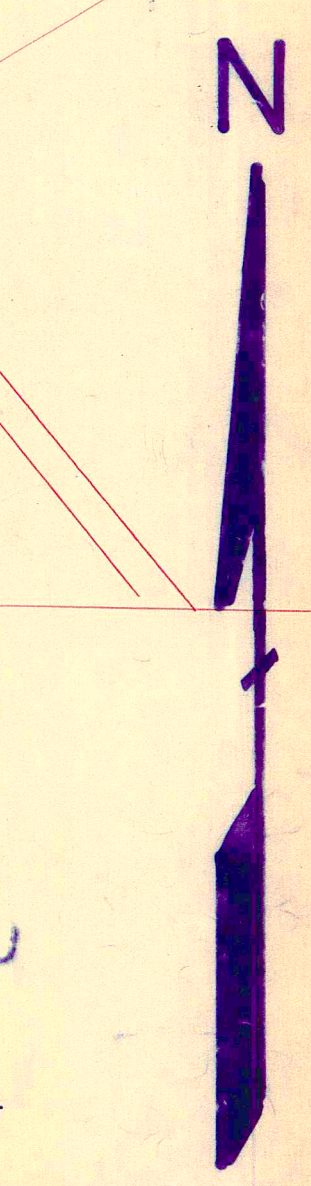
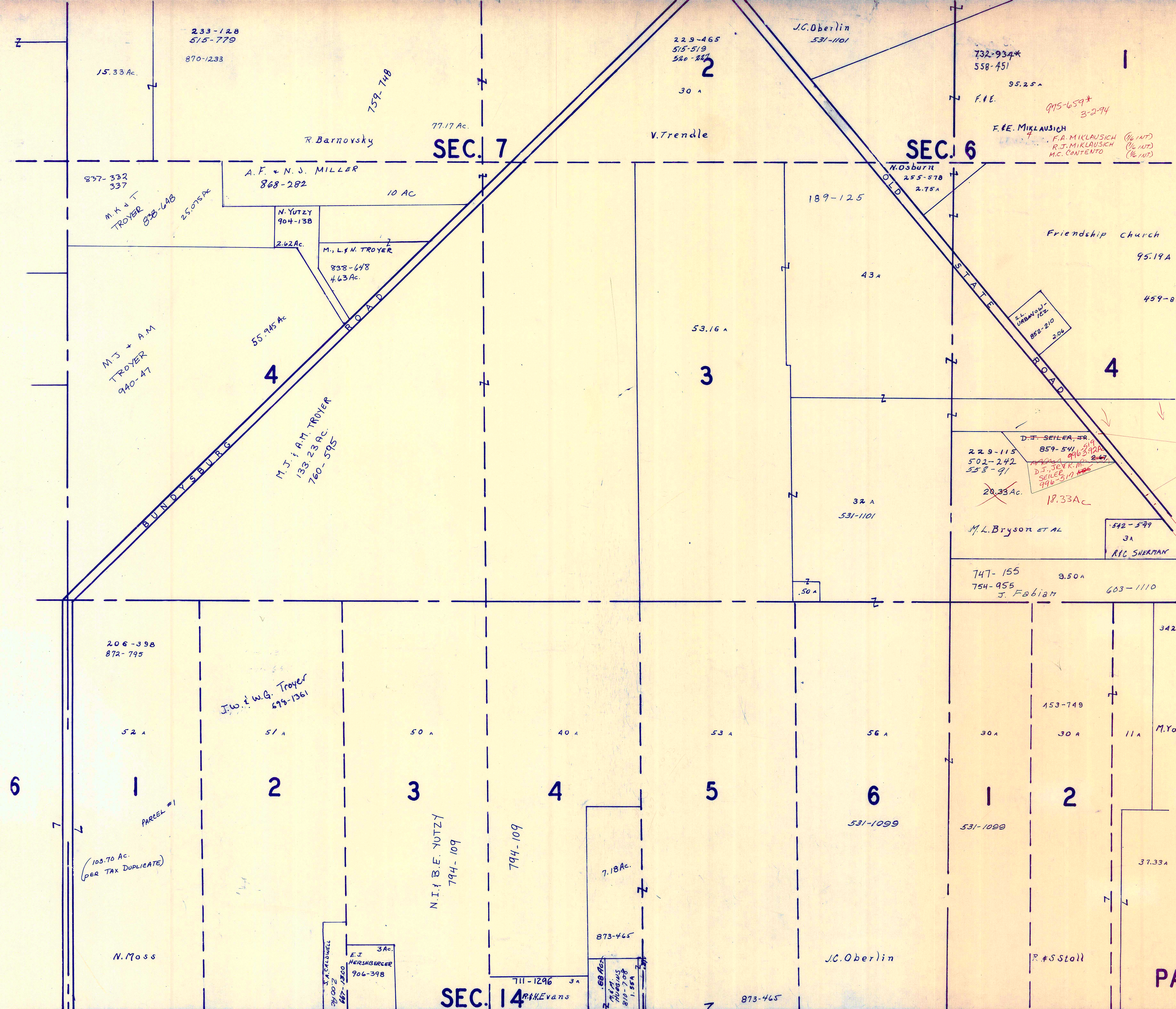
621-24
4 A
J.J. TROYER

703-1087
J.T. BLASKO

E. & S. ZAYLOR
502-7
40 AC.

50 A

PARKMAN TWP.



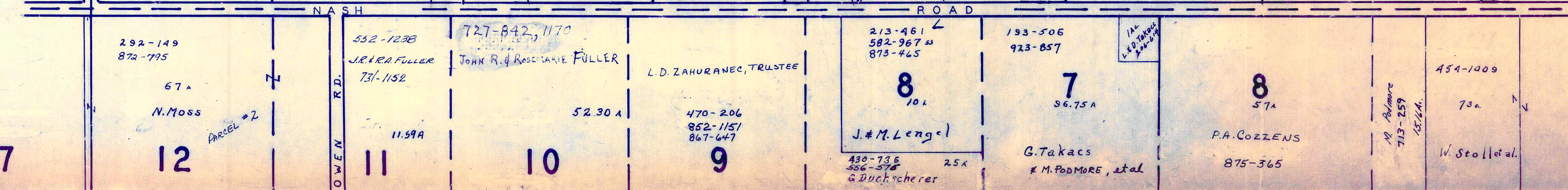
SCALE 1" = 300'

JAN. 1, 1994
RELATIVE REPRESENTATION

A	B	C	D
E	F	G	H
I	J	K	L
M	N	O	P

PARKMAN TWP.

* Inadequate description



7

12

11

10

9

8

7

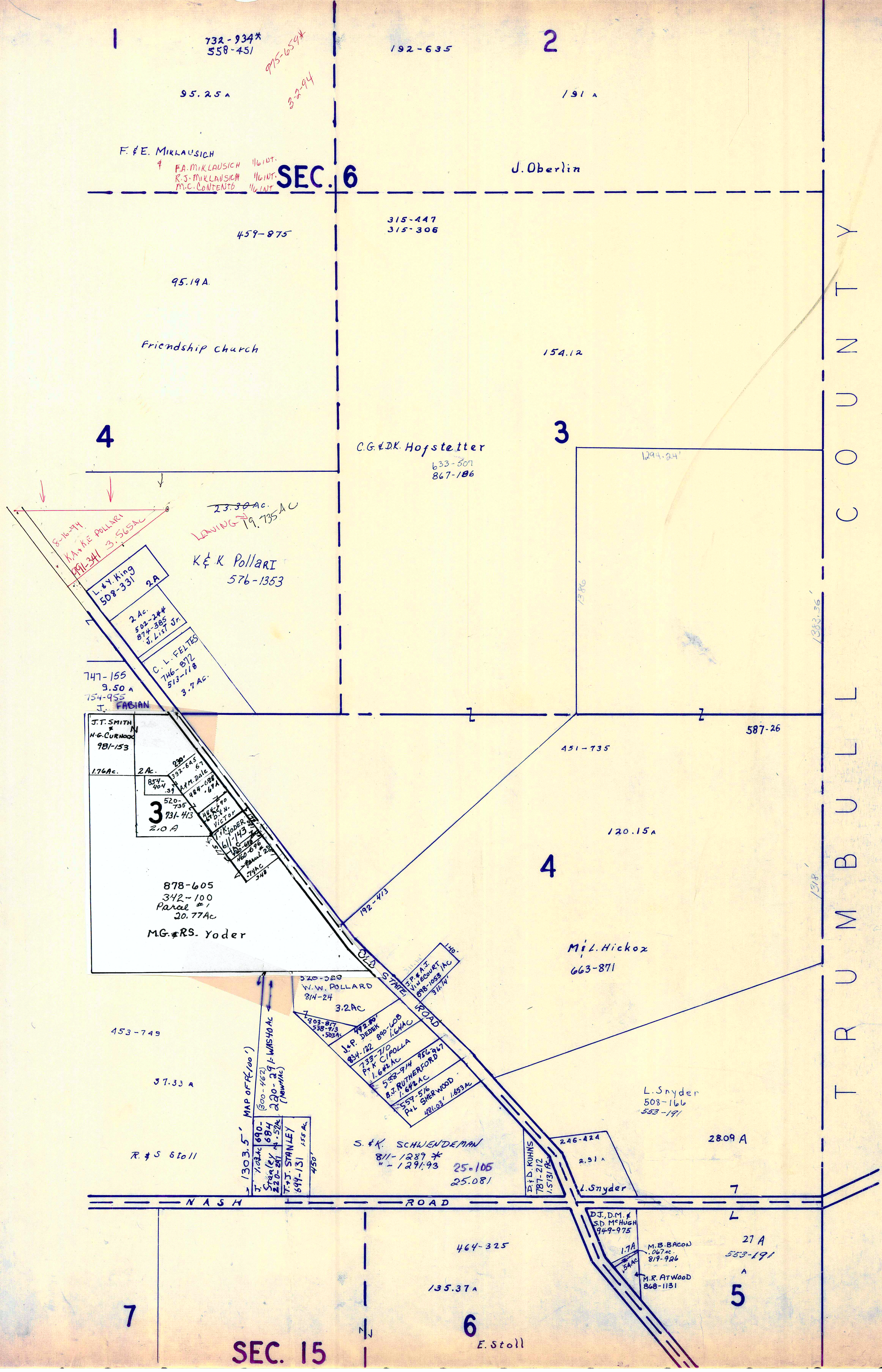
8

12

10

9

8



SEC. 6

SEC. 15

C
O
L
U
M
B
I
A
N



SCALE 1" = 300'

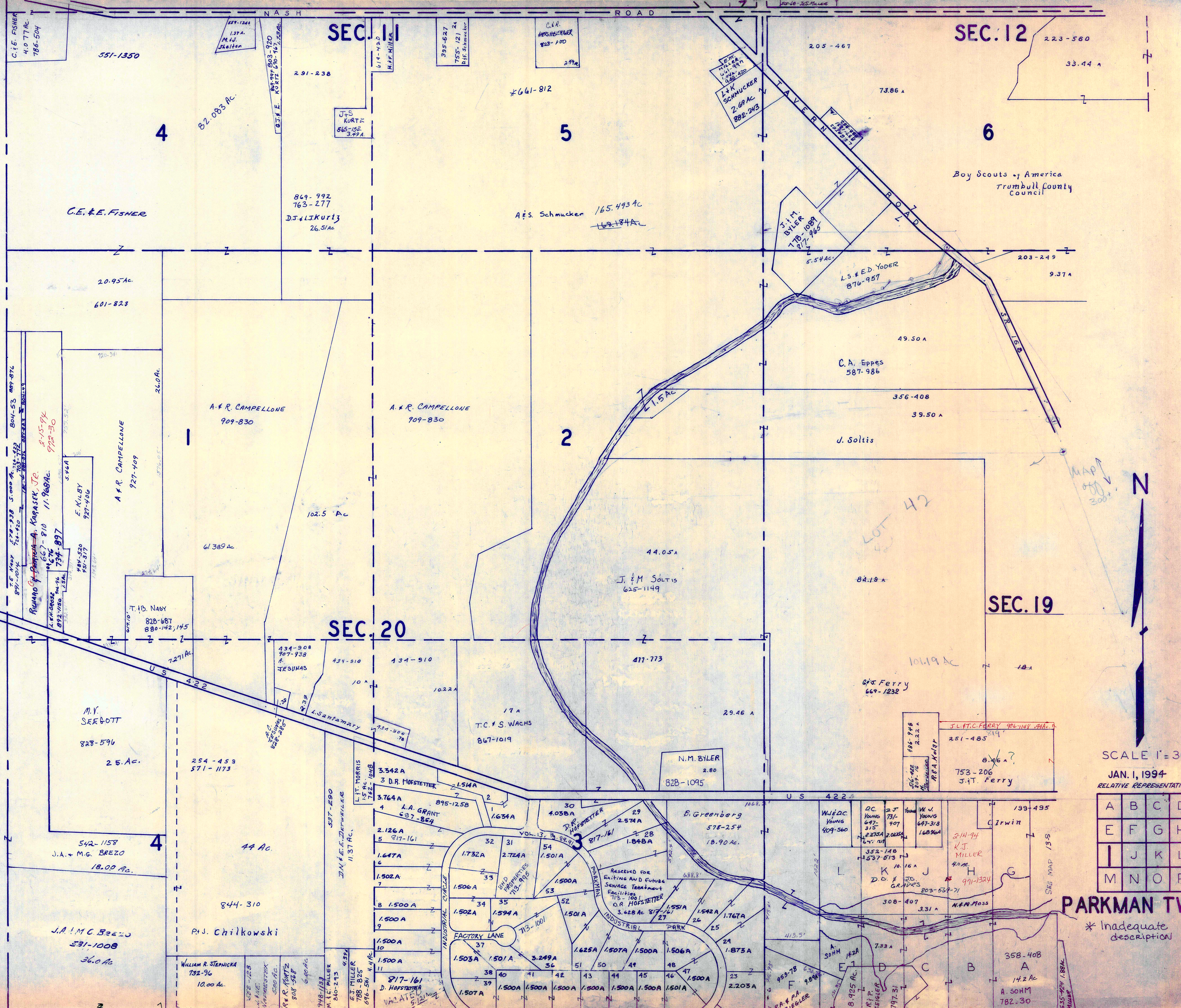
JAN. 1, 1994
RELATIVE REPRESENTATION

A	B	C	D
E	F	G	H
I	J	K	L
M	N	O	P

* Inadequate description

PARKMAN TWP.

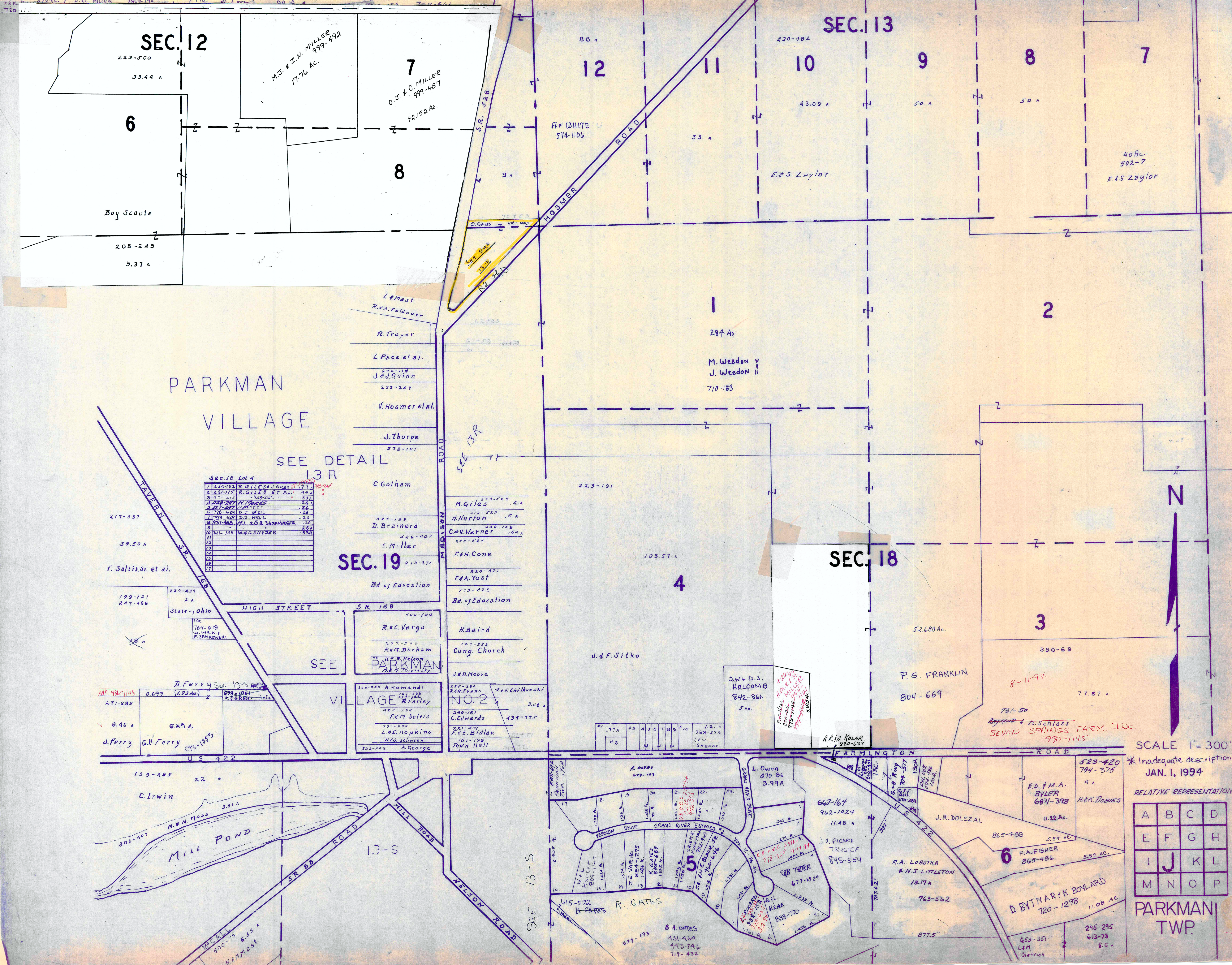
T R O Y T O W N S H I P



SCALE 1" = 300'
 JAN. 1, 1994
 RELATIVE REPRESENTATION

A	B	C	D
E	F	G	H
I	J	K	L
M	N	O	P

PARKMAN TWP.
 * Inadequate description



SEC. 12

SEC. 13

PARKMAN VILLAGE

SEE DETAIL 13 R

SEC. 19

SEC. 18

Sec. 18 Lot 4

1	254-732	R. GILES & J. GILES	1.77
2	221-115	R. GILES & ET AL.	.44
3	271-515	" " " "	.53
4	223-277	H. MARSH	.24
5	223-277	" " " "	.24
6	178-624	D. J. BRILL	.26
7	178-624	" " " "	.26
8	197-468	W.A. SGR SHORMAKER	.26
9	"	" " " "	.26
10	141-109	W.A. SNYDER	.53
11	"	" " " "	.53
12	"	" " " "	.53
13	"	" " " "	.53
14	"	" " " "	.53
15	"	" " " "	.53
16	"	" " " "	.53
17	"	" " " "	.53

355-260	A. Komandt
181-522	R. Farley
225-534	F. M. Soltis
231-529	L. E. Hopkins
101-529	H. S. Johnson
223-202	A. George

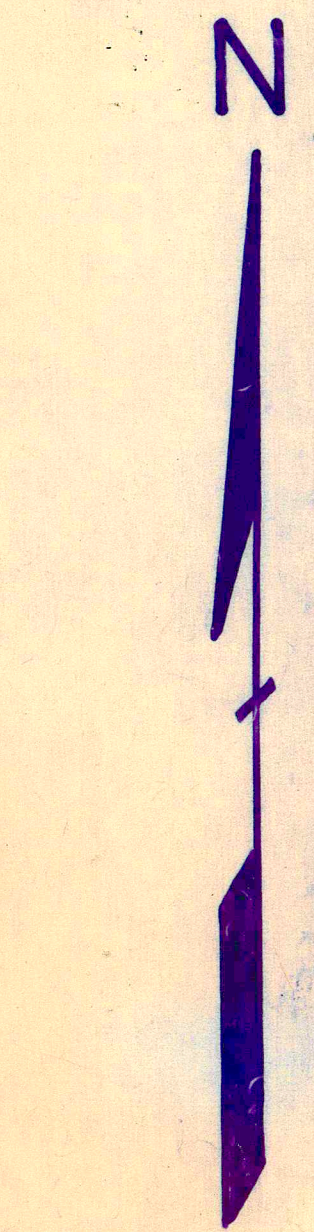
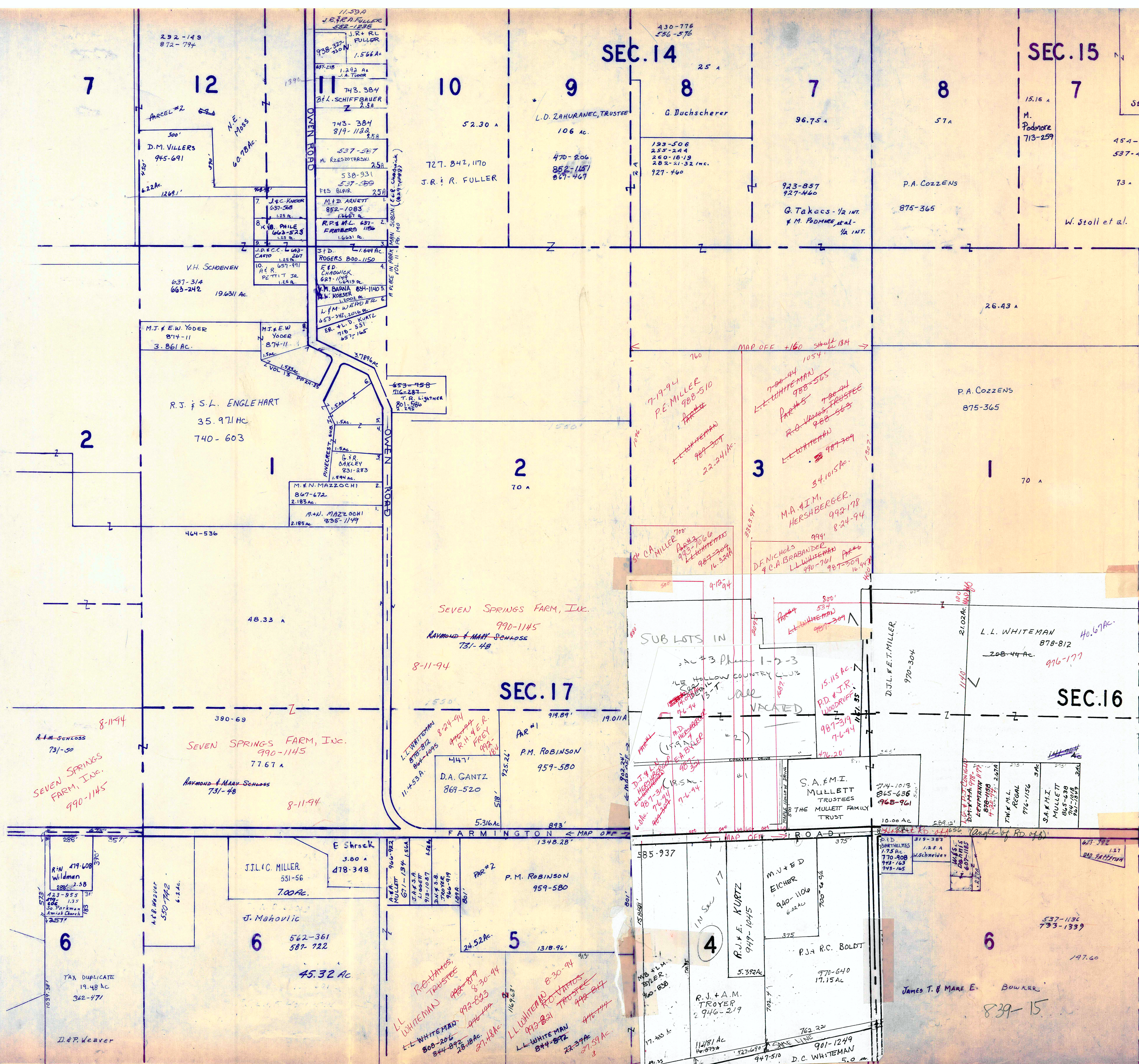
234-529	M. Giles
212-525	H. Norton
232-128	C. V. Warner
204-507	F. H. Cone
226-477	F. A. Yost
173-423	Bd. of Education
123-233	H. Baird
123-233	Cong. Church
308 A	J. & D. Moore
434-775	C. Edwards
701-529	F. E. Bidlak
701-529	Town Hall

SCALE 1" = 300'
 * Inadequate description
 JAN. 1, 1994

RELATIVE REPRESENTATION

A	B	C	D
E	F	G	H
I	J	K	L
M	N	O	P

PARKMAN TWP.

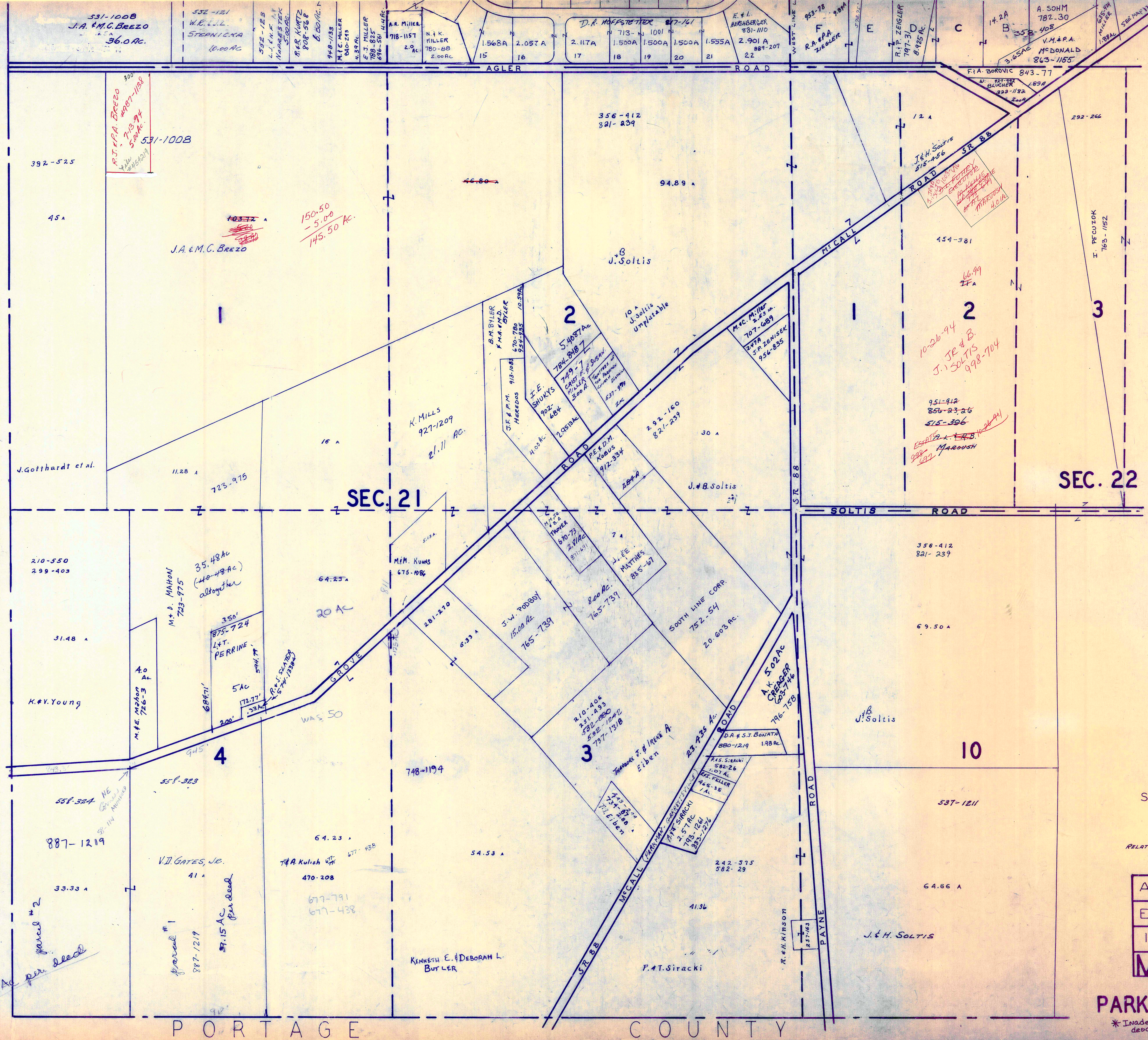


SCALE 1" = 300'

JAN. 1, 1994
RELATIVE REPRESENTATION

A	B	C	D
E	F	G	H
I	J	K	L
M	N	O	P

PARKMAN TWP
* Inadequate description



531-1008
J.A. & M.C. Beezo
56.0 Ac.

532-121
W.E. L.L.
STERNICKA
10.00 AC

552-123
L.I. K.F.
NAPLES
5.00 AC

818 KURTZ
808-368
6.00 AC

948-1135
M.L. MILLER
840-244
2.00 AC

538 AC
M.L. MILLER
508-855
896-561
44 AC

A.R. MILLER
718-1157
2.00 AC

N.K. MILLER
780-88
2.00 AC

15 16

1.568A 2.057A

2.117A 1.500A 1.500A

1.500A 1.500A

1.555A 2.901A

889-207

F.L. HERBERGER
831-110

953-78

R.A. & P.A. ZIEGLER
8425 AC

WEST LINE

R.P. ZEIGLER
797-310

E

1.2 A

1.2 A

1.2 A

1.2 A

1.2 A

1.2 A

1.2 A

1.2 A

1.2 A

1.2 A

1.2 A

F.L. BOROVIC
843-77

W. BILCHER
1899

222-1182

222-1182

222-1182

222-1182

222-1182

222-1182

222-1182

222-1182

222-1182

222-1182

222-1182

222-1182

222-1182

222-1182

222-1182

222-1182

222-1182

222-1182

222-1182

222-1182

222-1182

222-1182

222-1182

222-1182

222-1182

222-1182

222-1182

222-1182

222-1182

222-1182

222-1182

222-1182

222-1182

222-1182

222-1182

222-1182

222-1182

222-1182

222-1182

222-1182

222-1182

222-1182

222-1182

222-1182

222-1182

222-1182

222-1182

222-1182

222-1182

222-1182

222-1182

222-1182

222-1182

222-1182

222-1182

SCALE 1" = 300'

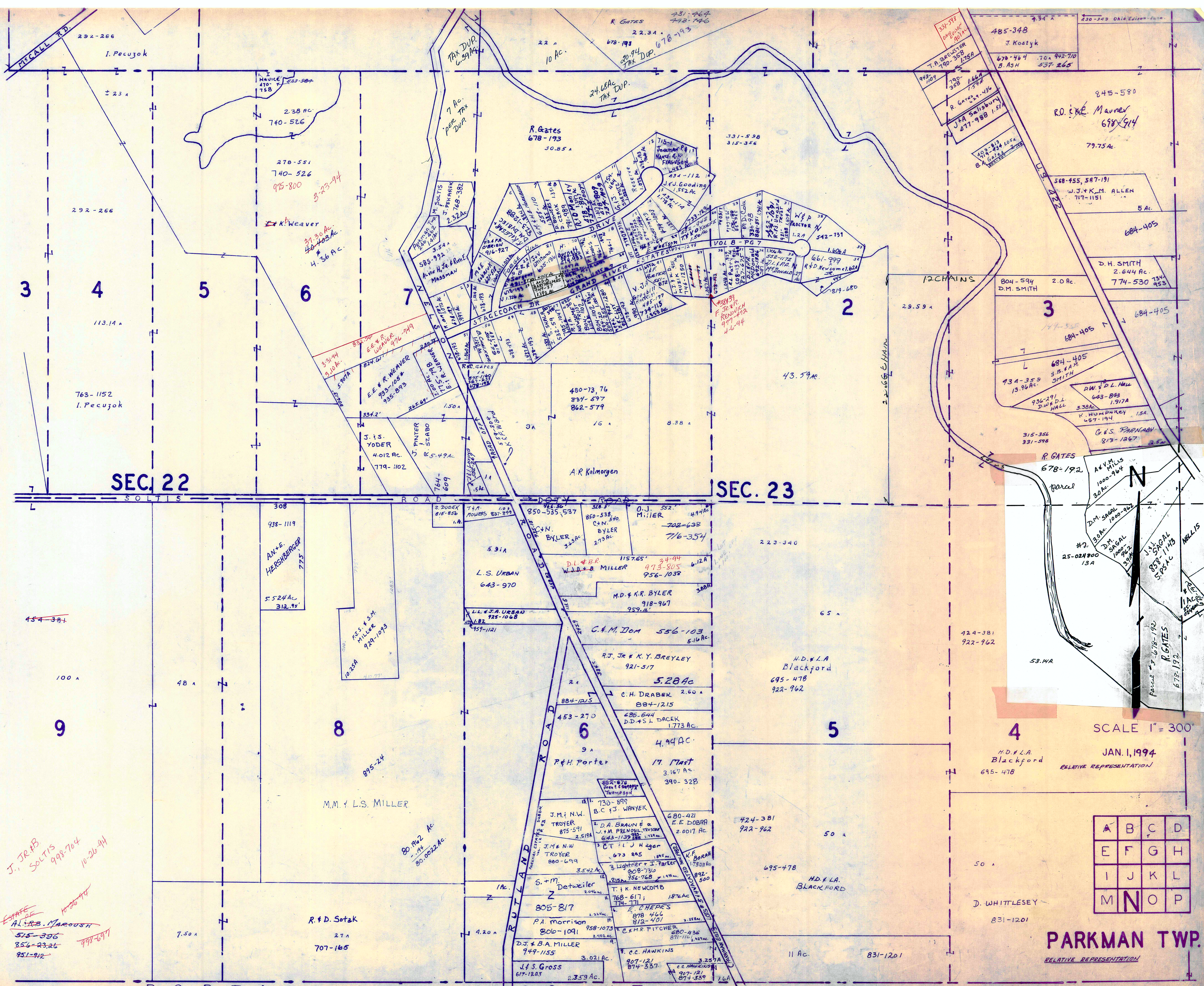
JAN. 1, 1994

RELATIVE REPRESENTATION

A	B	C	D
E	F	G	H
I	J	K	L
M	N	O	P

PARKMAN TWP.

* Inadequate description

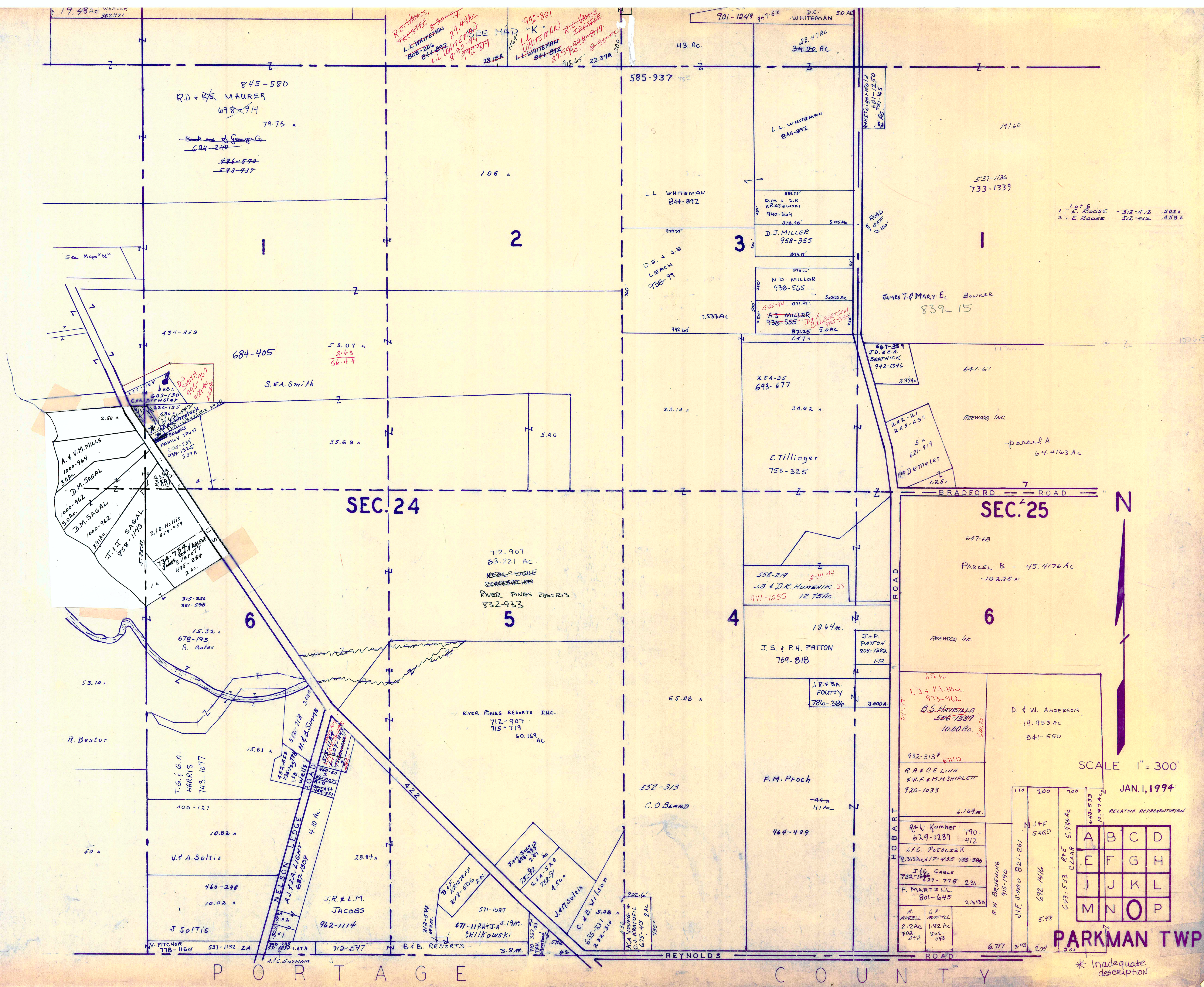


J. JR. & B. SOLTS 998-704 10-26-94
STATE OF MICHIGAN 10-26-94
ALICE MAROUSH 515-396 856-2326 997-697 951-912

A	B	C	D
E	F	G	H
I	J	K	L
M	N	O	P

PARKMAN TWP.
 RELATIVE REPRESENTATION

* Inadequate description



SEC. 24

SEC. 25



SCALE 1" = 300'

JAN. 1, 1994

RELATIVE REPRESENTATION

A	B	C	D
E	F	G	H
I	J	K	L
M	N	O	P

PARKMAN TWP.

* Inadequate description

P O R T A G E C O U N T Y



SEC. 25

5

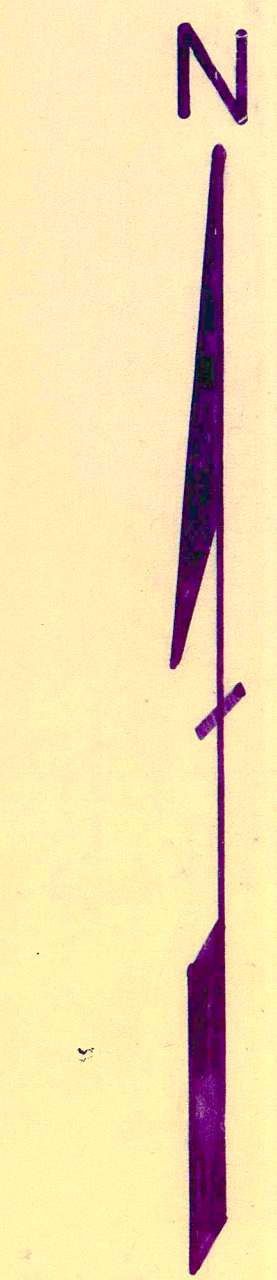
2

3

4

T R U M B U L L C O U N T Y

PORTAGE COUNTY



SCALE 1" = 300'

JAN. 1, 1994

RELATIVE REPRESENTATION

* Inadequate description

A	B	C	D
E	F	G	H
I	J	K	L
M	N	O	P

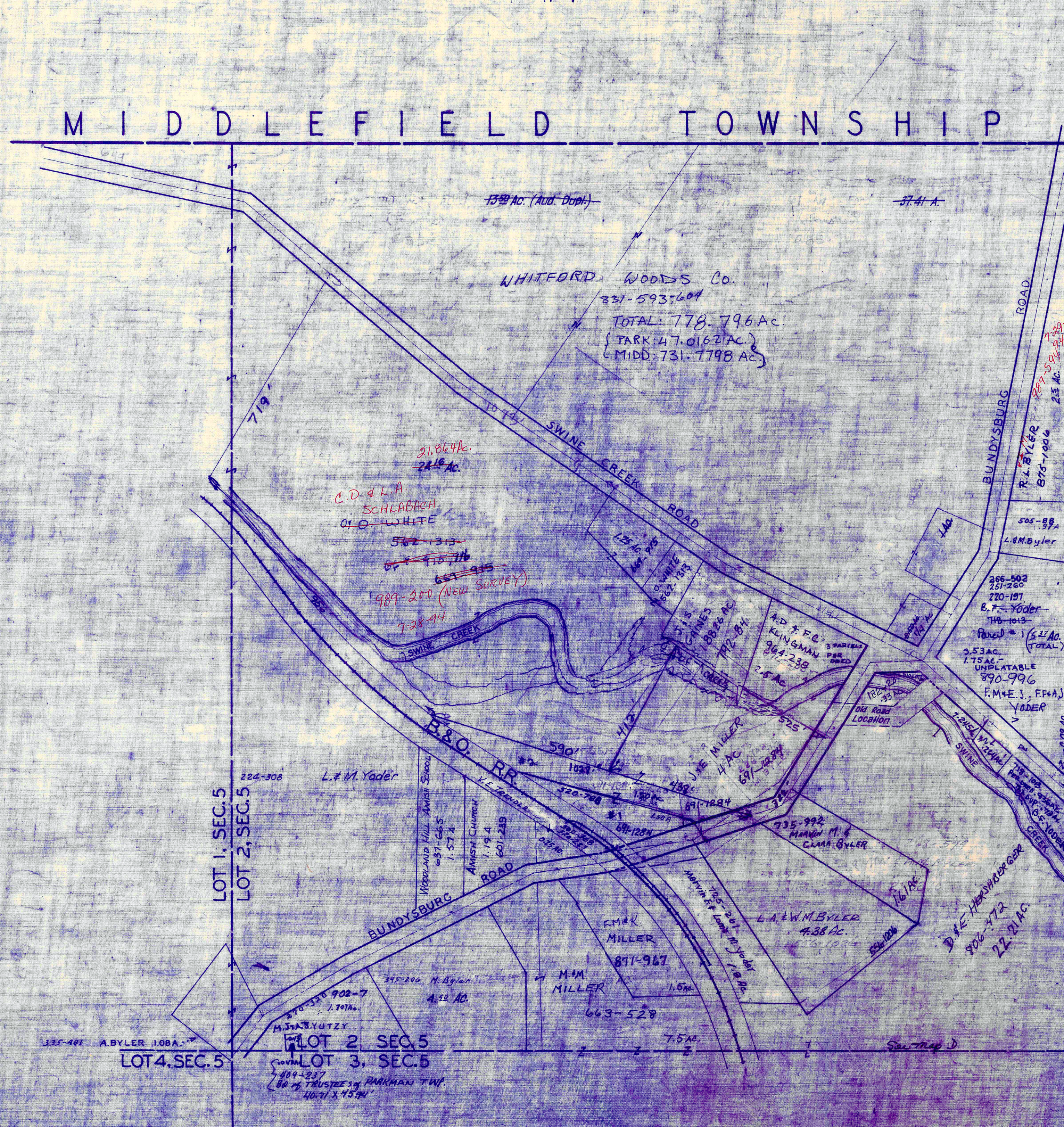
PARKMAN TWP

LOT 2, SECTION 5
BUNDYSBURG

PARKMAN T.P.

LOT 2, SECTION 5
BUNDYSBURG

MIDDLEFIELD TOWNSHIP



O
C
L
L
L
U
B
U
M
B
U
R
U
T

SEE SURVEY BOOK 7-111
COUNTY ENGINEERS FILE

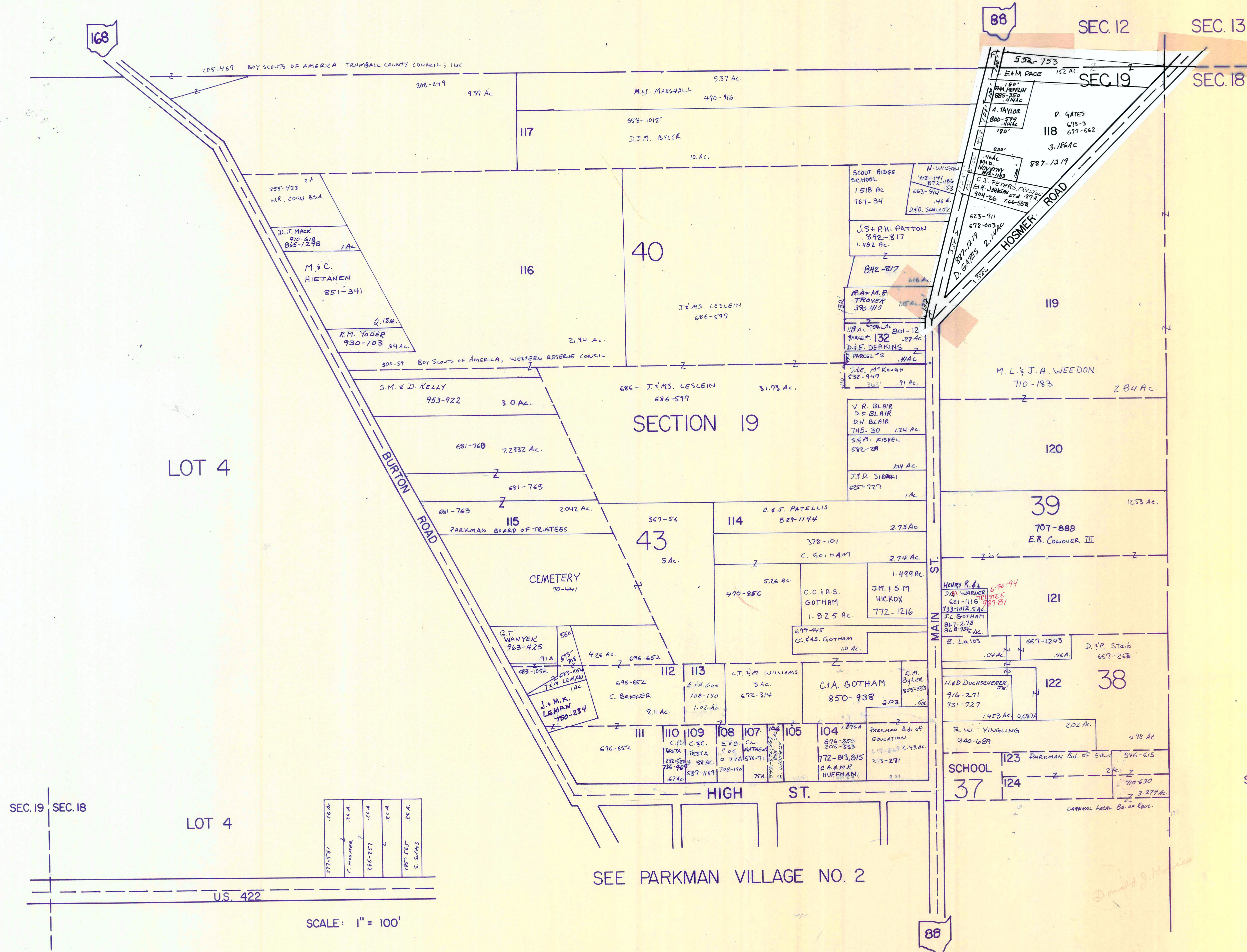
SCALE 1"=200 FT.

JAN. 1, 1994

RELATIVE REPRESENTATION

* Inadequate Description

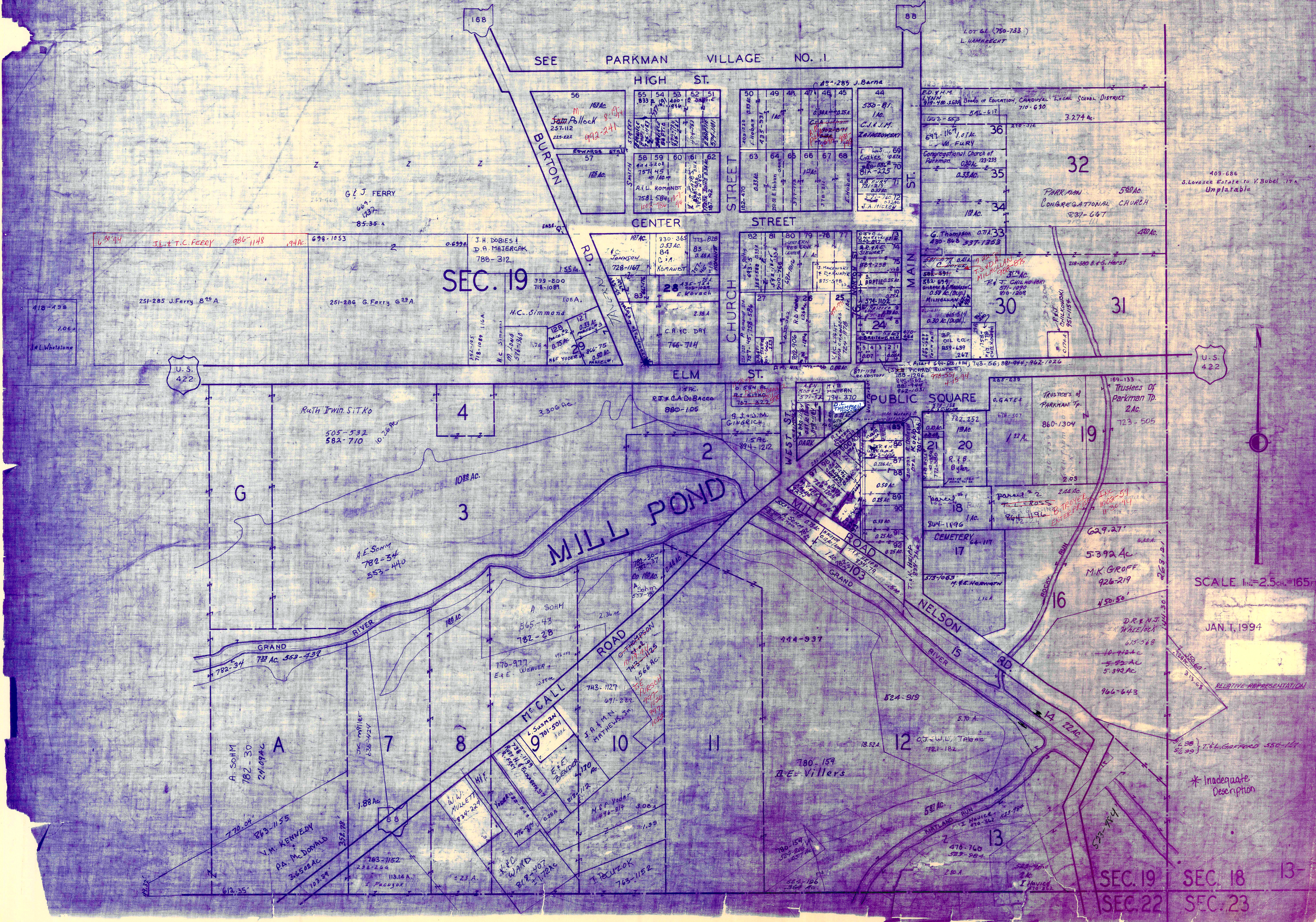
PARKMAN VILLAGE NO. I



SCALE: 1" = 200'

JAN. 1, 1994
 RELATIVE REPRESENTATION
 * Inadequate Description

PARKMAN VILLAGE NO. 2



SCALE 1 in. = 2.5 ch. = 165 ft.

JAN. 1, 1994

RELATIVE REPRESENTATION

* Inadequate Description

SEC. 19 SEC. 18 13-
SEC. 22 SEC. 23

